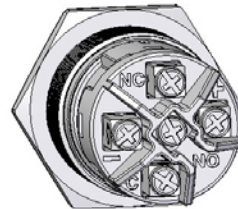


■ Part number codes

Series	Diameter	Material	Bezel / Lens	Connection	Switching action	Illumination	LED color	LED voltage
82	4 16 mm	1 Stainless steel	5 Flush / Flat	1 Soldering	0 Indicator	0 no LED	0 no LED	0 no LED
	5 19 mm	2 Chrome color	6 Raised / Flat	2 Screw	1 Momentary	1 Ring	1 Red	2 6 V AC/DC
	6 22 mm	3 Gold color	7 Flush / Convex		2 Maintained	2 Dot	2 Blue	3 12 V AC/DC
		5 Aluminum	8 Raised / Convex				3 Green	4 24 V AC/DC
							4 Yellow	5 110 V AC
						5 White	6 230 V AC	

White = Standard Products
 Yellow = Non-standard Products



■ Dimensions

16mm	19mm	22mm

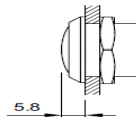
■ Overview of available versions

		Versions											
		Indicator				Pushbutton				Illum. Pushbutton			
		Raised Convex	Raised Flat	Flush	Flush Convex	Raised Convex	Raised Flat	Flush	Flush Convex	Raised Convex	Raised Flat	Flush	Flush Convex
Mounting hole	16mm		X	X	X	X	X	X	X		X	X	X
	19mm		X	X	X	X	X	X	X		X	X	X
	22mm		X	X	X	X	X	X	X		X	X	X
Function	Impulse					X	X	X	X		X	X	X
	Maintained					X	X	X	X		X	X	X
Connection	Plug In/Solder Terminal		X	X	X	X	X	X	X		X	X	X
	Screw Terminal		X	X	X	X	X	X	X		X	X	X
Lens Material	Stainless Steel		X	X	X	X	X	X	X		X	X	X
	Stainless Steel Chromium Color		X	X	X	X	X	X	X		X	X	X
	Brass Gold Color		X	X	X	X	X	X	X		X	X	X
	Aluminium natural anodized		X	X	X	X	X	X	X		X	X	X
Illumination	Ring Illumination		X	X	X						X	X	X
	Dot Illumination			X							X		
LED Color	Red		X	X	X						X	X	X
	Green		X	X	X						X	X	X
	Yellow		X	X	X						X	X	X
	Blue		X	X	X						X	X	X
	White		X	X	X						X	X	X
LED Voltage	6 VDC		X	X	X						X	X	X
	12 VDC		X	X	X						X	X	X
	24VDC		X	X	X						X	X	X
	110VDC		X	X	X						X	X	X
	230VDC		X	X	X						X	X	X

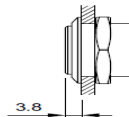
X = Standard version

X = Non-standard version

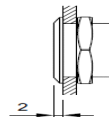
raised / convex



raised / flat



flush



flush / convex

